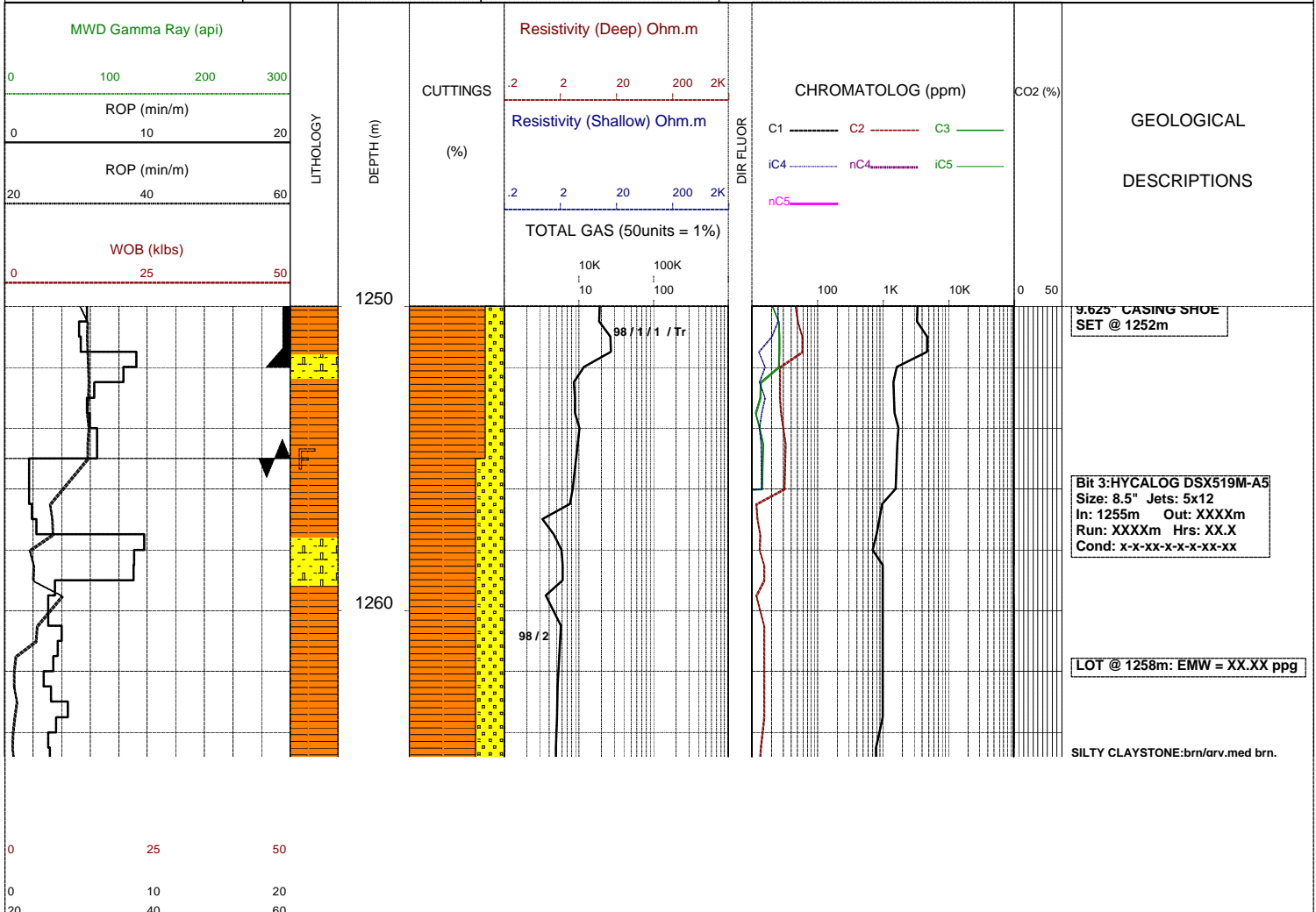
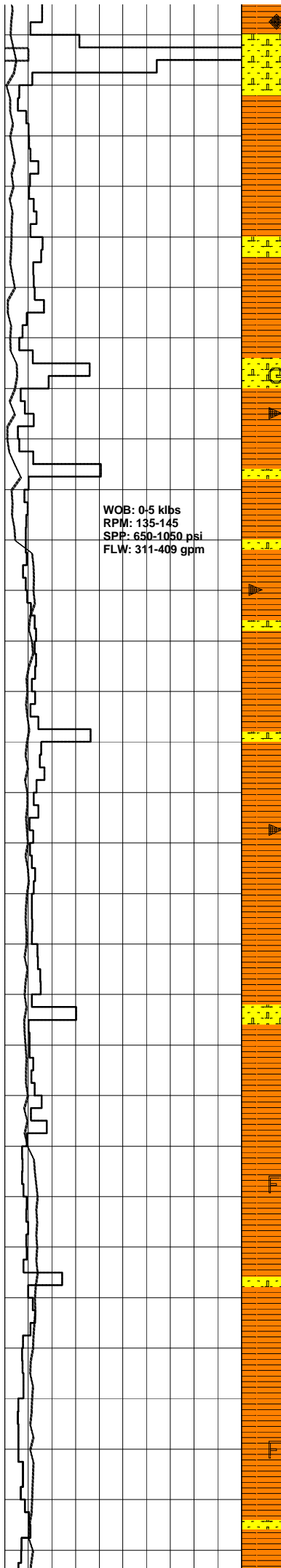


GLENAIRE 1

Field :	Kelly Bushing : PEP 160	Rig : ENSIGN 32	Open Hole:	Cased Hole:	Loggers : J.SUTTON
Block:	Ground Level : STATUS	Spud Date : 08/09/2006	17.5" (12.25") 307m	13.375" (9.625") 303.5m	N.LUIS
State : VICTORIA	GRS80 Ellipsoid MGA94 Zone54 :	TD Date : XX/XX/2006	12.25" (8.5") 1255m	9.625" (7.0") 1252m	J.TRETHEWEY
Country : AUSTRALIA	Lat. : 37°34'47.03S	Total Depth : VVV	8.5" XXXXm		
Scale : 1/ 200	Long. : 140°59'52.25E	Final Status : WWW		RRRR SSSS AAA	

LITHOLOGY	ACCESSORIES	DRILLING DATA	ABBREVIATIONS
<ul style="list-style-type: none"> Conglomerate Coarse Sandstone Med Sandstone Calcareous Sst Silty Sandstone Siltstone Carb. Siltstone Calc. Siltstone Clay Limestone Dolomite Coal Anhydrite Gypsum Igneous Volcanic Metamorphic Cement 	<ul style="list-style-type: none"> Pyrite Siderite Glauconite Feldspar Mica Ferrous Chert Calcareous Dolomitic Carbonaceous Lithoclast Breccia Foraminifera Corals Inoceramus Bryozoa Plant remains Fossils 	<ul style="list-style-type: none"> Casing Shoe Bit Trip Wiper Trip Core DST Deviation Survey 	<ul style="list-style-type: none"> BOPD - Barrels of Oil Per Day BWPD - Barrels of Water Per Day CG - Connection Gas CO - Circulate Out COND - Condensate c/c - Crush Cut DST - Drill Stem Test FLOW - Flow Rate (gal/min) GCM - Gas Cut Mud GCW - Gas Cut Water GTS - Gas To Surface INJ - Injection of Mist (bbls/hr) LCM - Lost Circulation Material MMCFD - Million Cubic Feet / Day NGTS - No Gas To Surface NOTS - No Oil To Surface NFTS - No Flow To Surface OCM - Oil Cut Mud OG - Over Gauge OH - Open Hole OTS - Oil To Surface Q - Flow Rate REC - Recovery FLUOR - Fluorescence ROP - Rate Of Penetration RPM - Revolutions Per Minute RTSTM - Rate Too Small To Measure Rw - Resistivity water r/r - Ring Residue SCFM - Standard Cubic Ft/Min (air) SGCM - Slightly Gas Cut Mud SPM - Strokes Per Minute SPP - Stand Pipe Pressure SWC - Side-Wall Core TG - Trip Gas WOB - Weight On Bit
		MUD DATA	
		<ul style="list-style-type: none"> MW - Mud Weight (lb/gal) FV - Funnel Viscosity (s/qt) PV - Plastic Viscosity (cps) YP - Yield Point (lb/100ftsq) Gel - Gel Strength (10sec) WL - Water Loss (cc/30min) pH - Acidity / Alkalinity Ck - Cake (32nd/inch) O/W/S - Oil / Water / Solids Cl - Chlorides (mg/L) K+ - Potassium (mg/L) Rmf - Res. Mud Filtrate (ohmm) 	





WOB: 0-5 klbs
 RPM: 135-145
 SPP: 650-1050 psi
 FLW: 311-409 gpm

1270
 1280
 1290
 1300
 1310
 1320

98 / 2 / Tr
 98 / 2
 98 / 2 / Tr
 98 / 2 / Tr / Tr
 98 / 2 / Tr
 98 / 2 / Tr

NO CO2
 NO H2S

med gry,mnr gry/grn,arg,occ carb spks & micrlams,mnr feld,tr pyr,sft-mod frm,sbbiky.

SANDSTONE:lt-med gry,vf-f,wl srt,sbrnd-sbang,com mod strg calc cmt,occ off wh arg mtx,com feld,occ carb spks,mnr glauc,mod hd-hd,nil vis por,no fluor.

COAL:(Tr)v dk brn-blk,dll-ea,slty,grd to carb SLTST,sft-brit,sbfiss-sbbiky,unevn.

SILTY CLAYSTONE:brn/gry,med gry,mnr gry/grn,arg,occ carb spks,occ feld,mnr brn mica fiks,sft-mod frm,sbbiky.

SANDSTONE:lt-med gry,vf-f,mod wl srt,sbrnd-sbang i/p,com mod strg calc cmt,occ-com off wh arg mtx,com carb spks,com feld,tr glauc,friv hd,ti vis & inf por,no fluor.

